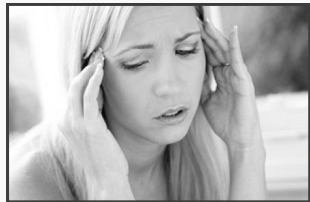


Unexplained Illness? It Could Be Your Electric Meter



Insomnia
Headaches
Ringing in Ears
Anxiety
... and more ...

While we are exposed to wireless radiation from many sources, smart meters have exceptional effects. Some people are affected immediately and severely. Long-term, nearly everyone will be affected because of smart meter effects on our cells and hormones.

Some of the health problems people experience immediately or soon after installation of the smart meter are:

- **heart palpitations**
- **insomnia**
- **tinnitus (ringing ears)**
- **difficulty thinking**
- **memory and/or attention problems**
- **high blood pressure / high blood sugar**
- **irritability or unusual anger**
- **rashes over body**
- **nosebleeds (esp children)**
- **vision problems (blurred, dry eye)**
- **fatigue**
- **anxiety**
- **jaw tension**

Some people cannot have a smart meter on their home. The health consequences are that severe! **More and more DTE customers are living without heat and electricity because DTE refuses to remove their smart meter** and replace it with the analog meter that has measured electricity for over a century. These people need our support. The media has a virtual blackout on this news.

Heart Palpitations
Fatigue
Irritability
High Blood Pressure
High Blood Sugar
Difficulty Thinking

Leslie and Drew's Story

Here's one of many stories illustrating how smart meters can severely affect your health without you knowing it. Drew, a 16-year-old diabetic boy, had had stable blood sugar levels since his diagnosis two years earlier. In July 2012, a smart meter was put on his home. Neither he nor his mother knew this. His mom, Leslie, was suddenly unable to sleep but didn't know why. In late August, after telling friends about her insomnia, someone asked her if a smart meter had been put on her home. "What's a smart meter?" she asked.

She discovered the smart meter, and learned it had been installed the day she became unable to sleep. Meanwhile, her son was sleeping just fine. But smart meters can be silent killers. Two months after the meter was put on his home, Drew went to the endocrinologist for his usual check-up. The doctor told him his blood-sugar levels had shot into the danger zone.

Leslie suspected the smart meter might be the cause of their symptoms. She spent months trying to get DTE to take it off their home. Finally, she took the smart meter off herself. Drew went back for his checkup a month later, and his blood-sugar levels had returned to a normal range. Three months later, at his next checkup, they were even better. His mother, meanwhile, was able to sleep again.

SmartMeterEducationNetwork.com

SmartMeterEducationNetwork@gmail.com
734-972-2677

Contact us. We're here to help.

People are getting just as sick from the opt-out meter as the regular smart meter.

Smart meters and so-called opt-out meters generate *noise on the line*, or *dirty electricity*. Dirty electricity is a pulsed, spiky, highly variable electromagnetic field that travels through your home's wiring and radiates out into your living areas. The millisecond pulses are like a jackhammer hitting your cells 24/7, and damage them.

These voltage spikes are also responsible for the flickering lights, appliance short-outs, and fires that some homes experience after a smart meter is installed.

Smart meter radiation:

- Disrupts nerve signaling, which can result in sleep, heart, and memory problems and muscle spasms.
- **Disrupts hormones (blood sugar, thyroid, blood pressure, melatonin)**
- Causes oxidative stress (what anti-oxidants combat). Some people are less resilient to oxidative stress, probably for genetic reasons, but eventually oxidative stress will wear down everyone. Symptoms include fatigue, cataracts, and inflammation.
- **Damages the blood-brain barrier, contributing to diseases such as Alzheimer's, dementia and Parkinson's**
- Harms DNA (leading to cancer, fetal problems)
- **Classified as a Class 2B carcinogen by the World Health Organization**
- Harms bees, worms, and other beneficial creatures.

The effects of smart meters are cumulative. Just because you can't feel it doesn't mean it's not affecting you. You can't feel radon, either.

Brain signals are affected by smart meters.

